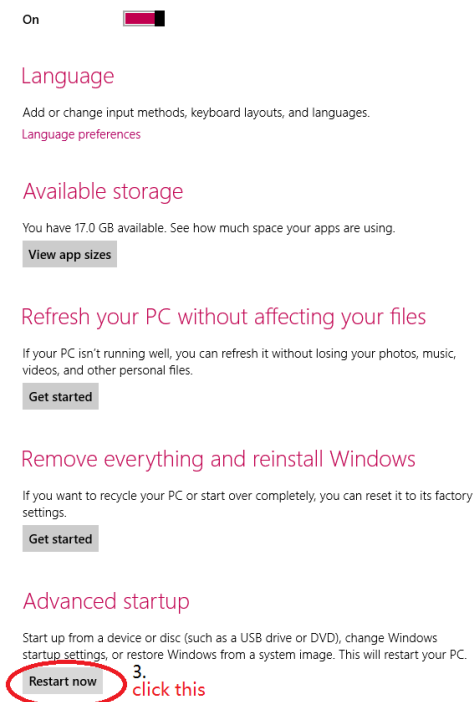
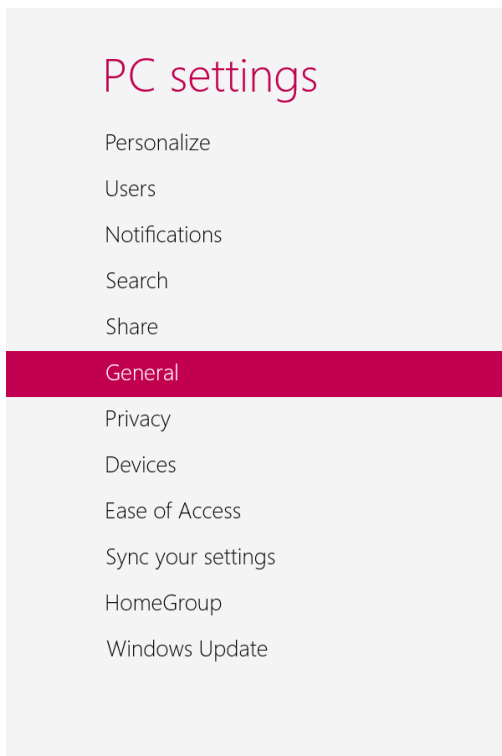
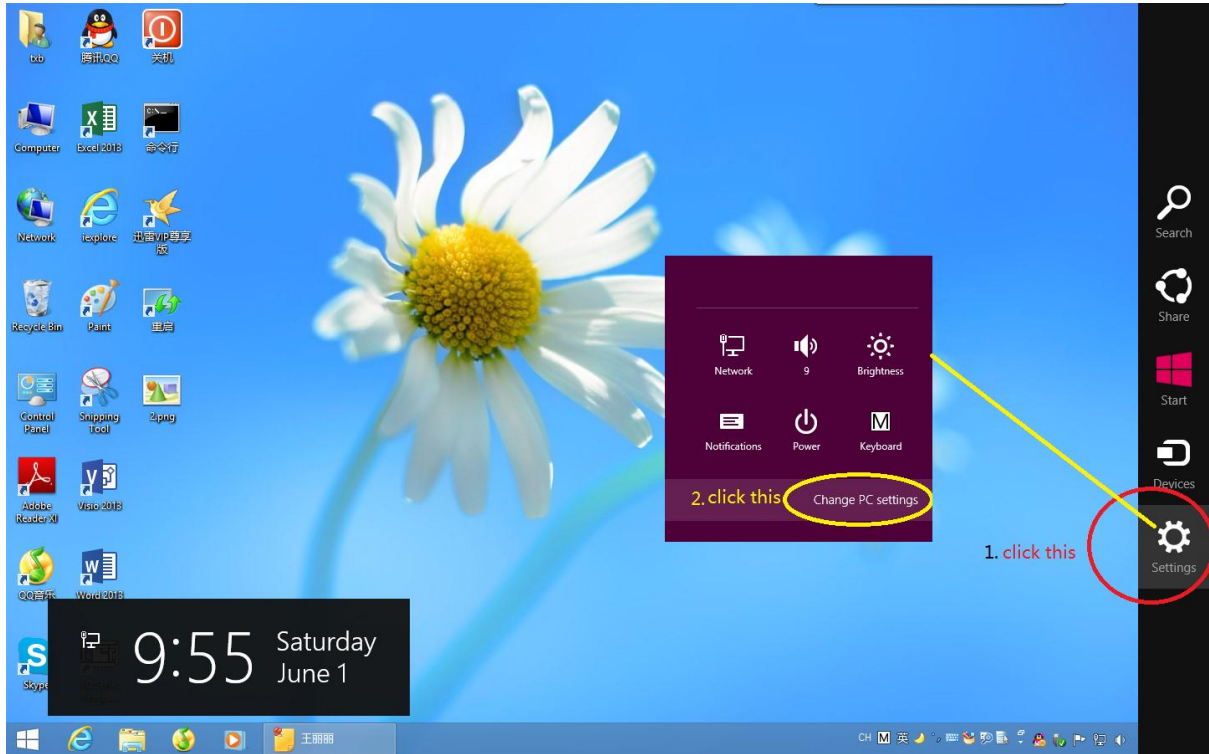
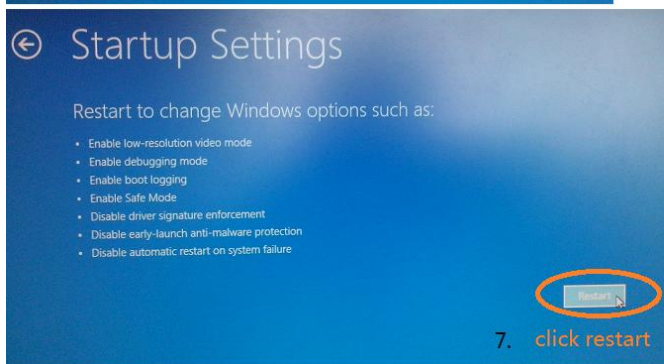
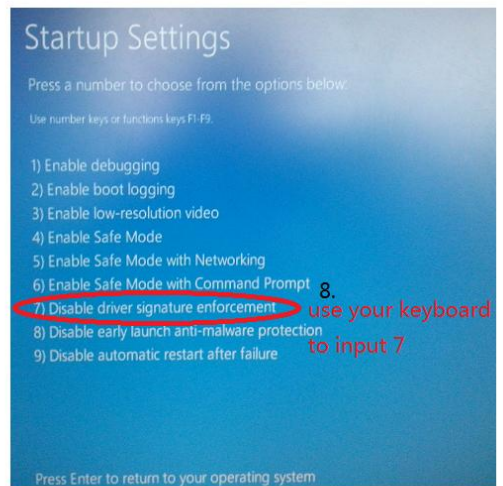
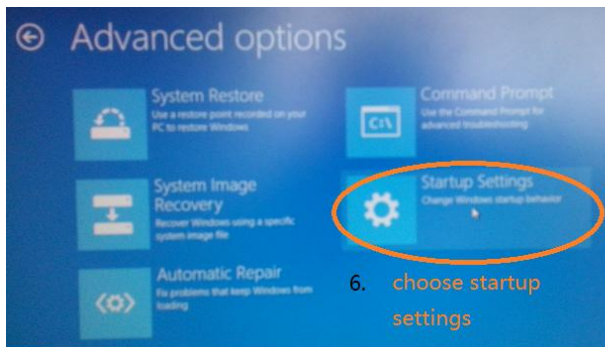
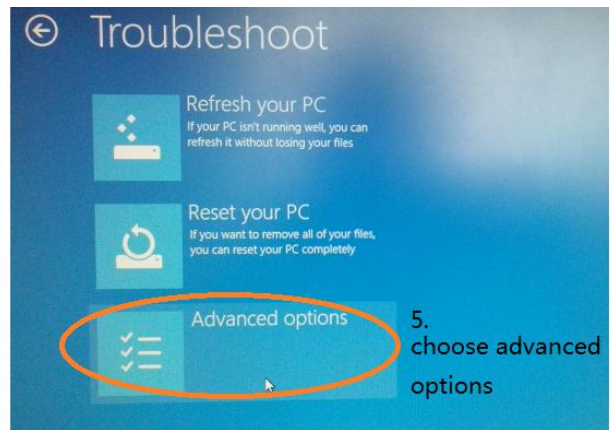
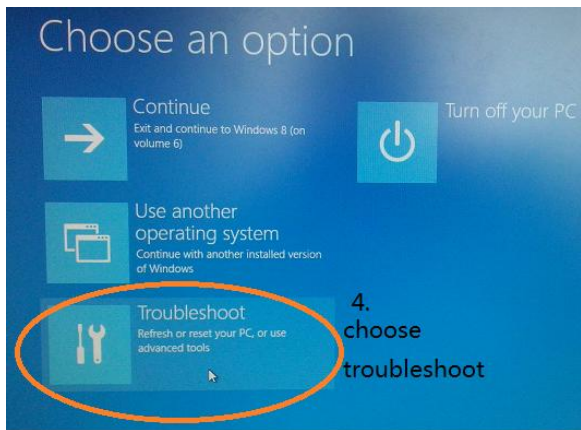


이 자료는 영문 Window 8에서 TH용 USB 드라이버를 설치할 수 있는 방법을 설명한 것입니다. 한국어 윈도우8이나 윈도우8.1에서는 약간의 차이가 있을 수 있습니다.





How to install Touchwin USB driver in Win8

1. Change Win8 settings as the picture orders 1 to 8 (picture 12, 3, 45, 678).
2. Then try to install the USB driver.

If your system is win8 32bits, please install win7-32bits USB driver.
 If your system is win8 64bits, please install win7-64bits USB driver